



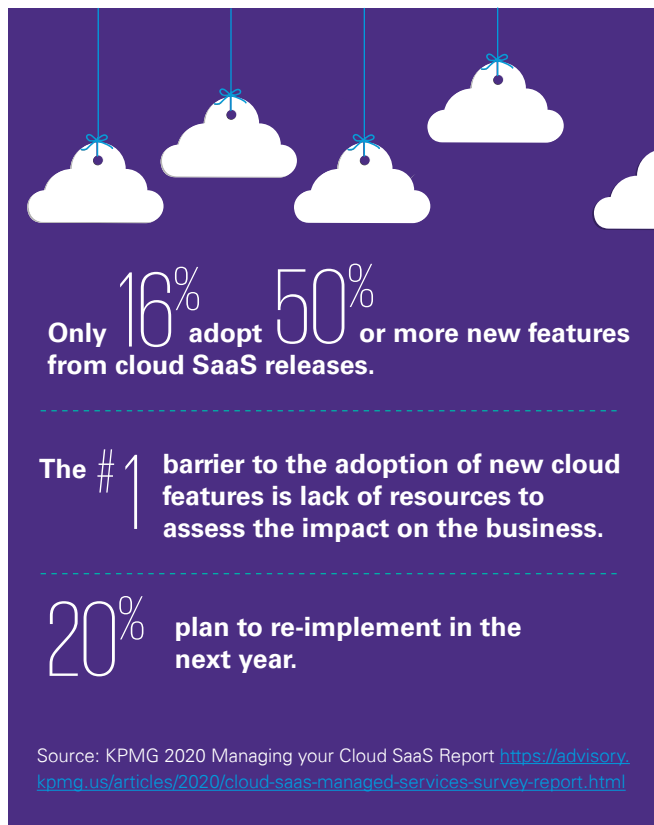
# Oracle Cloud Health Check

## Maximizing your cloud investment

### Your back office in the cloud

While many companies have benefited from the move to Oracle Cloud, not all implementations go as planned. Business models or market conditions can change. Poor employee adoption or high operating costs can result in inefficiencies. Add to this the continuous innovations from Oracle releases demanding skilled functional and technical resources and an enterprise can quickly deviate from a desired target operating model state.

So, how do you get back on track and enhance your cloud investment? **A KPMG Oracle Cloud Health Check may be just the answer you are looking for.**

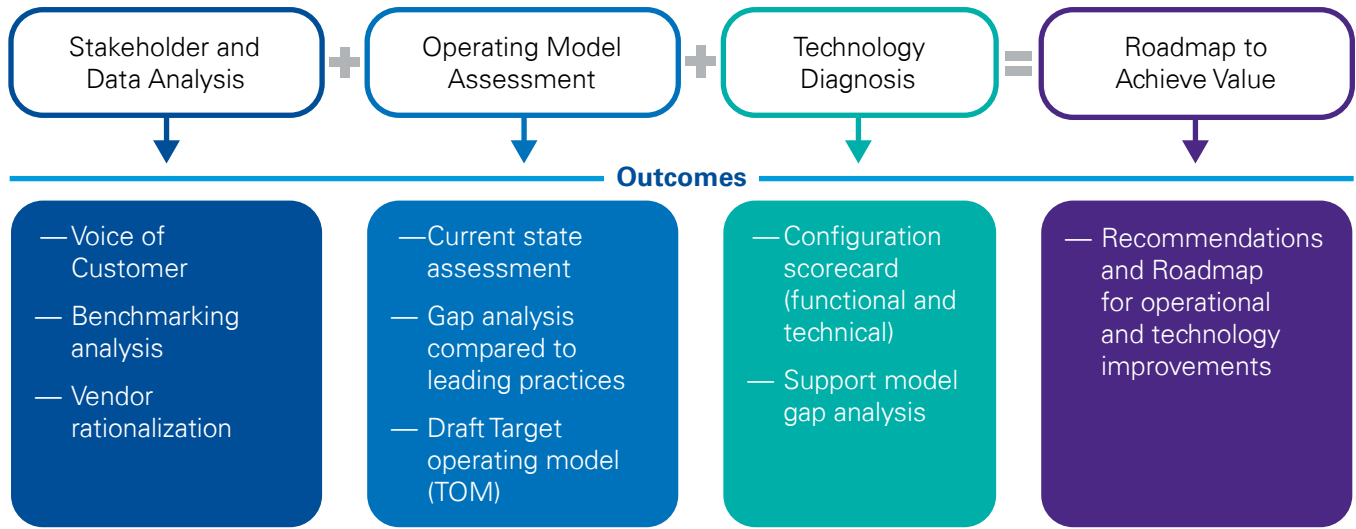


### When is a Health Check Right?

- Business growth, new stakeholders, mergers and acquisition are impacting delivery of services
- Turnover of key team members has left knowledge gap
- Not experiencing expected return on Oracle investment
- Back office functions across Finance, HR, and / or Supply Chain are perceived as inefficient/costly
- Same processes recreated in a new system ("lift and shift") that could be administered more efficiently
- Have had difficulties in keeping up with Oracle new release functionality
- Manual processes still performed outside of Oracle
- Initial configuration no longer supports business needs

### Approach

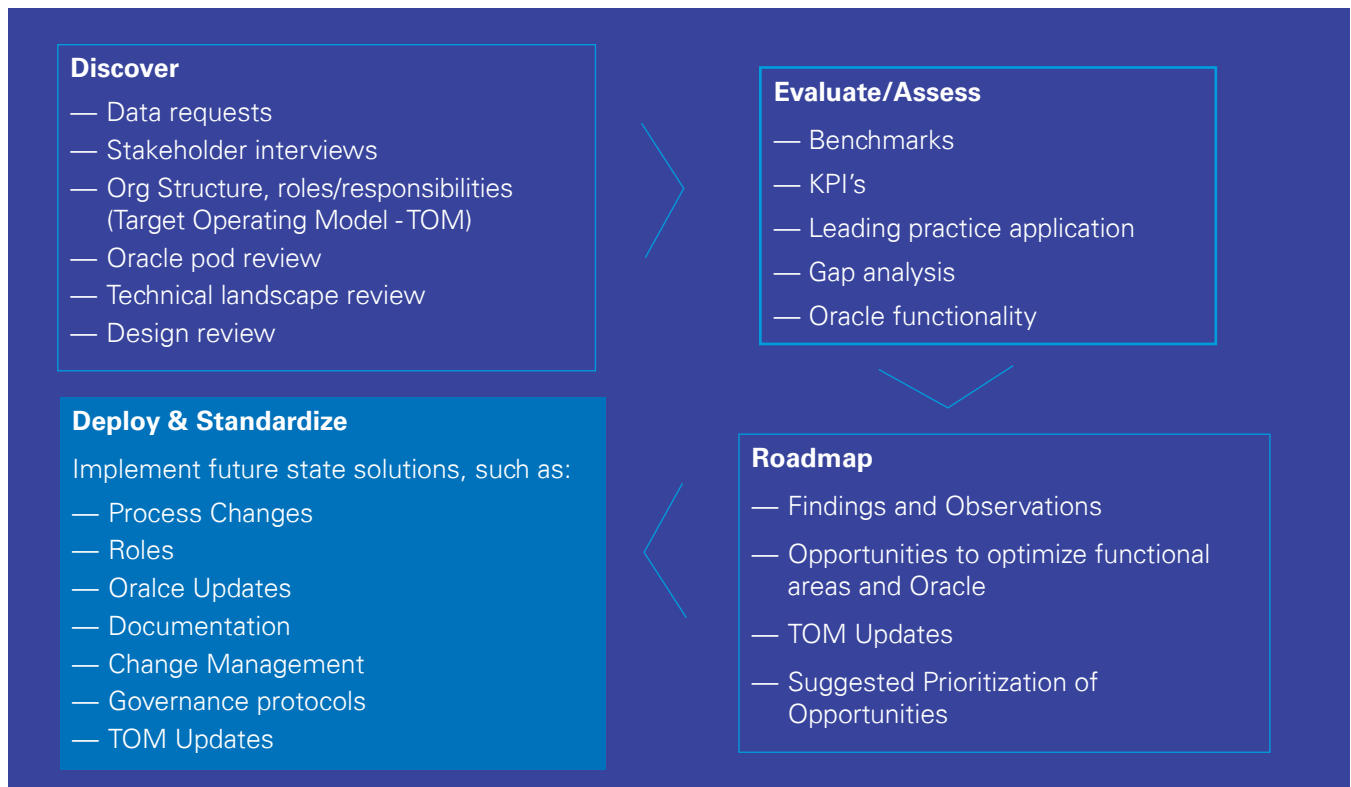
The Oracle Cloud Health Check will enable us to provide your organization with specific recommendations for improving how you deliver your services as well as optimizing Oracle across your Finance (including EPM Procurement), HR, and/or Supply Chain organizations so you may realize the intended return of your Oracle investment.



### Methodology

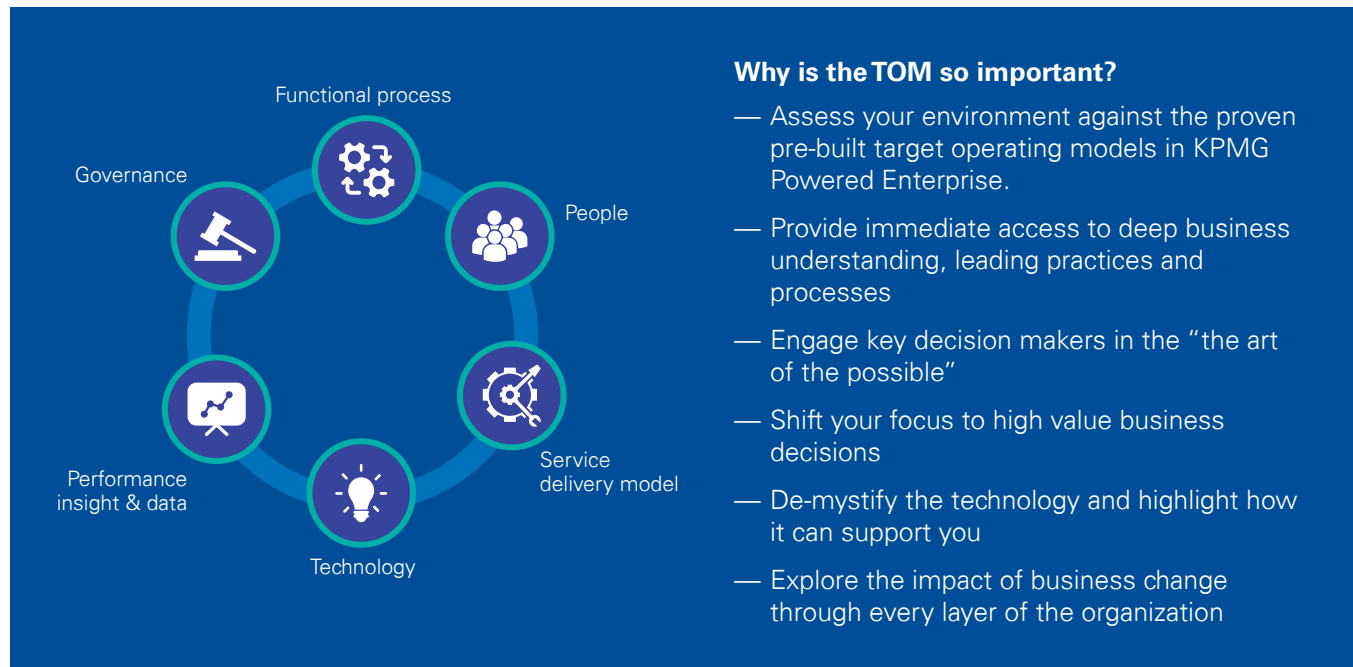
Regardless of your original Oracle Cloud implementation provider, the KPMG methodology can be applied as part of the Health Check process.

Health Check Scope To be scoped following Health Check (optional add-on)



## The KPMG Target Operating Model

Business and function performance are about more than technology. The KPMG Target Operating Model (TOM) framework allows us to look at all parts of your operation when assessing where improvement opportunities may lie.



## Key benefits of a KPMG Oracle Cloud Health Check



During the Health Check process, your Oracle Cloud Enterprise will be evaluated against our proven approach KPMG Powered Enterprise. Powered Enterprise is a solution for rapid business modernization. We’ve combined our experience gained from working across thousands of functional transformations with our knowledge of the latest cloud technologies. The result is a formula for driving sustainable change, rising performance and lasting value – delivering your business objectives with a high level of certainty.

### KPMG is a leader in Oracle Cloud solutions

- A network of over 3,500 dedicated KPMG consultants working to deliver value for member firm clients in 44 countries and territories
- 1,500+ successful engagements with 170+ Oracle Cloud deployments
- Experience with the full suite of Oracle Cloud modules across multiple industries

## Contact us

**To find out more about Powered Enterprise enabled by Oracle and the impact it can have on your business, visit:**

<http://read.kpmg.us/powerenterprise>

**Linsey Ryan**

**Principal, Advisory | Enterprise Solutions**

**T:** 312-665-2547

**E:** [linseyryan@kpmg.com](mailto:linseyryan@kpmg.com)

**Dusty Knight**

**Director, Oracle Alliance**

**T:** 512-320-5172

**E:** [dustyknight@kpmg.com](mailto:dustyknight@kpmg.com)

Some or all of the services described herein may not be permissible for KPMG audit clients and their affiliates or related entities.

[kpmg.com/socialmedia](http://kpmg.com/socialmedia)



The information contained herein is of a general nature and is not intended to address the circumstances of any particular individual or entity. Although we endeavor to provide accurate and timely information, there can be no guarantee that such information is accurate as of the date it is received or that it will continue to be accurate in the future. No one should act upon such information without appropriate professional advice after a thorough examination of the particular situation.

© 2020 KPMG LLP, a Delaware limited liability partnership and a member firm of the KPMG global organization of independent member firms affiliated with KPMG International Limited, a private English company limited by guarantee. All rights reserved. The KPMG name and logo are trademarks used under license by the independent member firms of the KPMG global organization. NDP132215-1A